

# KIGTEK



**CONTROL SYSTEM ENGINEERING**

**FUNCTIONAL SAFETY**

**SOFTWARE ENGINEERING**

**DIGITAL TWIN**

**ELECTRICAL ENGINEERING**

**PANEL ASSEMBLY**

**CALIBRATION SERVICES**

**MAINTENANCE & SUPPORT**





## CONTROL SYSTEM ENGINEERING

Delivering robust and well-designed control solutions using the latest technologies from multiple providers such as Siemens, Rockwell, GE, Schneider and many more.

- Control, monitoring and safety solutions
- New Installations
- System modifications
- Legacy migration
- SCADA systems
- Motor control (VSD, DOL etc)
- Maintenance & support



## SOFTWARE ENGINEERING

Developing bespoke software and reporting solutions which can be integrated into site operations and process control systems.

- CASKTEK - CASK management software
- Database development software
- Data Historians
- IOT data analysis & web based distribution
- Digital simulation
- Cybersecurity
- Data Back-Ups and disaster recovery

## FUNCTIONAL SAFETY

Implementing new Process Safety Systems as well as assisting with the management of existing SIS Systems in full compliance with BS EN 61508 / 61511.

- Safety Instrumented Systems (SIS)
- Installation, maintenance & support
- Alarm systems
- BS EN 61508 & BS EN 61511 standards guidance

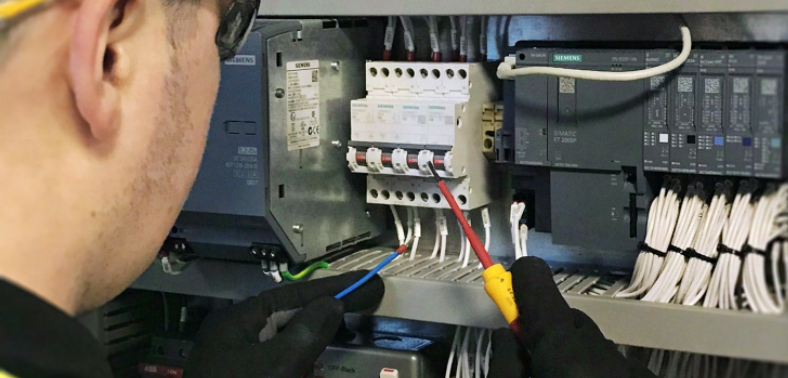


## DIGITAL TWIN

Utilising the latest software tools to create and utilise plant simulations to help design and commission robust, efficient processes and control systems.

- Digital Design & Prototyping
- Process & Plant Simulation
- Virtual Commissioning
- Machine Learning
- Augmented Reality & Interaction





## ELECTRICAL ENGINEERING

Significant experience of providing a range of electrical solutions in industrial and hazardous environments.

- Instrument cabling & integration
- Panel build & installation
- Hazardous environment solutions (ATEX etc)
- Low voltage (LV), general lighting & power
- Motor starters & Variable Speed Drivers (VSD)
- Pneumatic systems
- Emergency systems
- Emergency Lighting



## CALIBRATION SERVICES

Provide cost-effective, on-site calibration services for Tanks, Vats and Instrumentation.

- Flow, pressure, level and temperature calibration
- Flow meters
- Sensors & transmitters
- Tanks and vats
- 0.5" to 3" line sizes
- Overall rig uncertainty of 0.5%

## PANEL ASSEMBLY

Building and fitting-out enclosures to fulfil plant control system requirements.

- Bespoke panel design & build
- ATEX and IECEx standards
- Server and industrial PC racks
- Motor Control Centres (MCC)
- Control system, HMI and starter panels
- LV switchboards



## MAINTENANCE & SUPPORT

Working with customers to provide bespoke service level agreements to meet production requirements.

- On-Call Control system support
- Remote support capability
- System health checks & reporting
- Secure data Back-Ups and disaster recovery
- Scheduled instrument and tank calibration
- Proof interval testing



# SECTORS

**DISTILLING**

**BREWING**

**FOOD**

**NUCLEAR ENERGY**

**MANUFACTURING**

**RENEWABLE ENERGY**



# CONTACT

Douglas House

Pochard Way

Strathclyde Business Park

Bellshill

North Lanarkshire

ML4 3HB

Phone: 08451 800 863

E-mail: [sales@kigtek.com](mailto:sales@kigtek.com)

[www.kigtek.com](http://www.kigtek.com)

Or find us on:

Linkedin, Twitter, and Facebook